

Sindoh A3 Color MFP – D310 / D311



COPY

Classification		D310	D311	
Speed (Color / Black and White)		22 / 22 ppm	28 / 28 ppm	
Preheating time		Less than 20 seconds		
First page copy speed (Color / Black and White)		Less than 8.4 seconds / Less than 6.8 seconds		
Print resolution		Up to 1,800 (Equivalent) x 600 dpi		
Processor		ARM Cortex-A7 Dual Core 1.2 GHz		
Memory		2 GB (std.) 4 GB (max.)		
HDD		250 GB (option)		
Duplex print		Standard		
Paper	Paper Feed	Standard Tray	1,000 sheets (500 sheets x 2-sets, 80 g/m ²)	
		Multi-purpose tray	100 sheets (80 g/m ²)	
		RADF	100 sheets (80 g/m ²)	
	Size	Standard Tray 1	A5 ~ B4, 5.5" x 8.5" ~ 8.5" x 14"	
		Standard Tray 2	A5 ~ A3, 5.5" x 8.5" ~ 11" x 17"	
		Multi-purpose tray	A6 ~ A3, 5.5" x 8.5" ~ 11" x 17"	
	Weight	Standard Tray	60 ~ 256 g/m ²	
		Multi-purpose tray	60 ~ 256 g/m ²	
		RADF	Thin Paper 35 g/m ² ~ 49 g/m ² (single-sided), Plain Paper 50 g/m ² ~ 128 g/m ² (single-sided/Duplex)	
Output Tray		250 sheets		
Consumables	Toner	Black and White	24,000 sheets	
	Color	21,000 sheets		
Others	Power	Max power consumption	Less than 1.6 kw	
		In printing	Less than 66dB	
	Noise	In stand-by	Less than 46dB	
		Display	7-inch Color LCD	
	Size (W x D x H)		585 x 700 x 906mm (MFP + RADF)	
	Weight		82Kg (MFP + RADF)	

SCAN

Classification		D310	D311
Scan mode		Color, Gray Scale, Black and White	
Speed (at 300 dpi, color / Black and White)		45 / 45 ipm (A4 / RADF)	
Resolution	Push	200 / 300 / 400 / 600 dpi	
	Pull	100 / 200 / 300 / 400 / 600 dpi	
Interface		10Base-T / 100Base-TX / 1000Base-T	
Protocol		TCP / IP (FTP, SMB, SMTP, WebDAV) (IPv4 / IPv6)	
OS compatible		Windows Vista / Vista (x64) / 7 / 7 (x64) / 8 / 8 (x64) / 8.1 / 8.1 (x64) / 10	
Support format		TIFF, JPEG, PDF, Compact PDF, OOXML (pptx, docx, xlsx), XPS, Compact XPS, Searchable PDF, PDF/A, Linearised PDF	

PRINT

Classification		D310	D311
Speed (Color / Black and White)		22 / 22 ppm	28 / 28 ppm
Resolution		Up to 1,800 x 600 dpi	
Emulation		PCL5e/c, PCL6, PostScript3, XPS ver 1.0	
OS compatible	PCL	Windows Vista / Vista (x64) / 7 / 7 (x64) / 8 / 8 (x64) / 8.1 / 8.1 (x64) / 10 Windows Server 2008 / 2008 (x64) / 2008 R2 / 2012 / 2012 R2	
	PS	Windows Vista / Vista (x64) / 7 / 7 (x64) / 8 / 8 (x64) / 8.1 / 8.1 (x64) Windows Server 2008 / 2008 (x64) / 2008 R2 / 2012 / 2012 R2 MacOSX (10.6 / 10.7 / 10.8 / 10.9 / 10.10)	
	XPS	Windows Vista / Vista (x64) / 7 / 7 (x64) / 8 / 8 (x64) / 8.1 / 8.1 (x64) Windows Server 2008 / 2008 (x64) / 2008 R2 / 2012 / 2012 R2	
Memory		2 GB	
Interface		Ethernet 10Base-T / 100Base-TX / 1000Base-T USB 2.0 (High-Speed) / 1.1	

FAX (option)

Classification		D310	D311
Communication lines		PSTN (Public Switch Telephone Network), PBX (Private Branch Exchange), G3 (Fax line)	
Tx speed		2.4 ~ 33.6 kbps	
Tx time		3 second or less (A4, V.3 4, 33.6 kbps, JBIG)	
Data compression type		MH, MR, MMR, JBIG	
Communication mode		ECM / G3	
Tx size	Flat Bed	Width 297 x length 431.8 mm (A3 or 11" x 17")	
	RADF	Width 297 x length 1,000 mm	



Total solution for smart users
Sindoh A3 Color MFP
D310 / D311

※ Some images in this catalog show the product with the optional features installed.

Realize the best office solution through an entirely new innovation

Sindoh A3 Color MFP D310 / D311



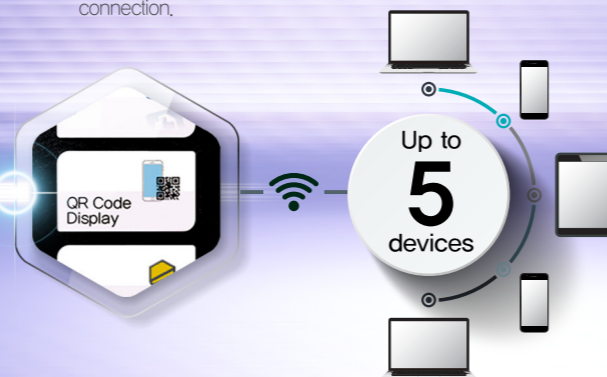
7-inch color LCD & User-friendly interface

Usability is highly enhanced with 7-inch color touch LCD screen. Also, shortcut keys can be set for frequently used functions and main screen can be configured to one of three types: Mapscroll, Tab and Grid.



Mobile device connectivity

As OP panel displays registry information as QR code, it can be connected directly to a broad type of up to 5 mobile devices for printing and scanning without any wireless LAN connection.

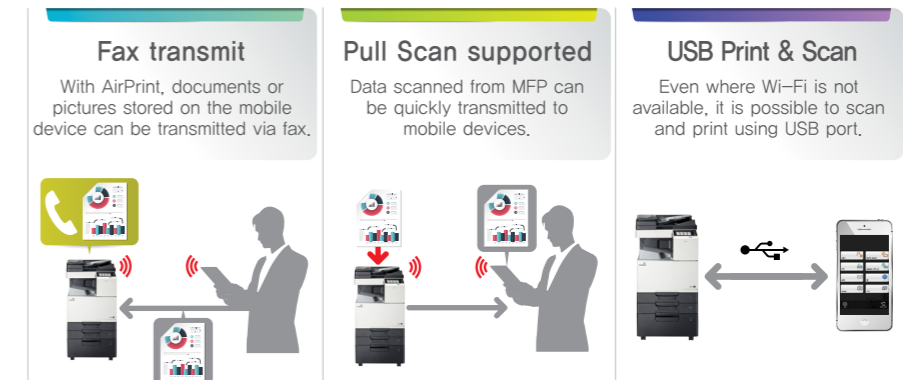


Smart & Mobile

Mobile solution for the modern smart office

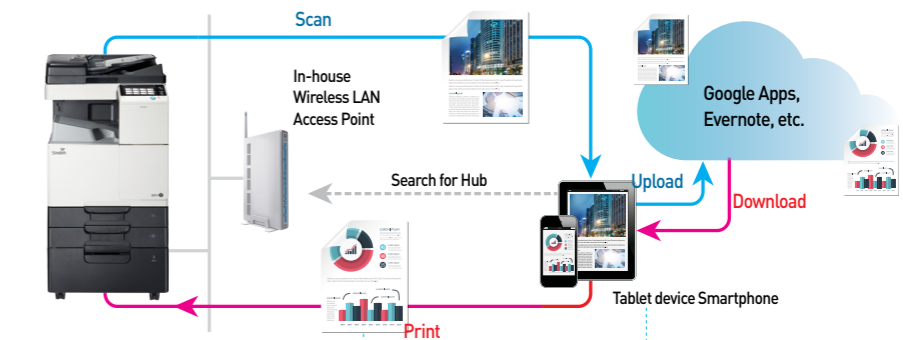
Apple AirPrint 1.5 function supported

With AirPrint, it is able to wirelessly print, fax and scan by connecting to Apple device without installing other programs. Even where Wi-Fi is not available, scanned files can be stored using USB port and compatible printers can be searched for using wireless LAN.



Various data formats and easy printing supported

Documents and images can be set to different type of data formats (PDF, JPEG, pptx, etc.) and printing methods (duplex, combination, secure printing etc.) by connecting to mobile devices such as Smartphone, Tablet, etc.



Printing Setting

- Duplex, single-sided, combination
- Sorting, punch
- Input tray selection
- User account
- Secure printing

Printable Data

- Mobile APP (PDF, XPS, TIFF, JPEG, pptx, docx, xls)
- Emails and attachments of Mobile APP
- Webpage, pictures, etc

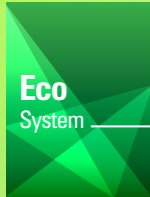
Easy and convenient mobile functions

As Mobile touch area is embedded into OP panel, it is possible to use NFC functions. Also, it supports various functions by connecting mobile devices and MFPs via Sindoh mobile office application.

Pairing settings	Easy to connect to network of MFP via Mobile touch area
Logging in to this unit	Able to login to MFP using user information registered to mobile
Print & Scan	Able to printing scanned images from MFP at one as well as storing them to mobile document box, with camera/web/email functions supported

※ NFC : Near Field Communication



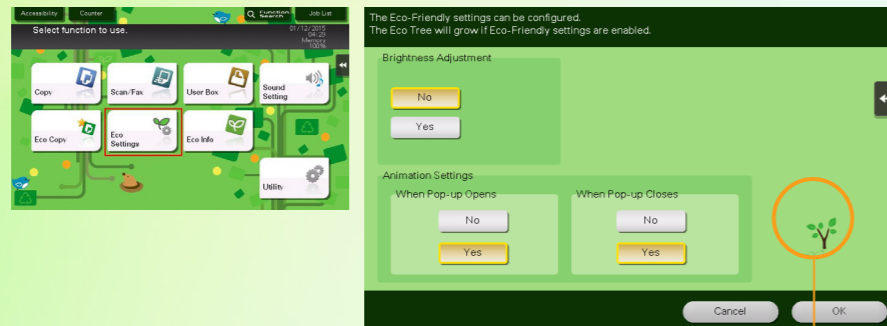


Eco-Friendly

Environment-friendly data and low power device management

Environment-friendly data management

Eco function can be registered as shortcut from main screen. Paper and toner saving mode such as intensive printing, duplex copying can be easily set. Also, accumulated power consumption can be listed per hour and month for easy management.



When setting Eco function, Eco tree grows up based on the ratio of accumulated hours.

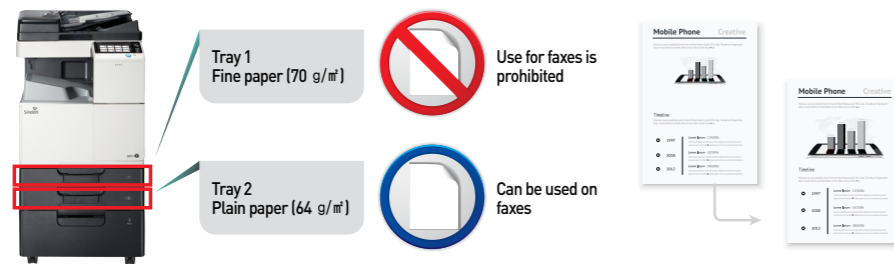


Office Solution

Customized office solution for high work efficiency

Enhanced fax receiving settings

By limiting the printing of documents received from fax to specific paper tray, it is easy to manage the documents. Also, it automatically recognizes the blank parts of the received documents and supports the optimized printing, so its readability can be highly enhanced.



Wi-Fi Direct Print supported

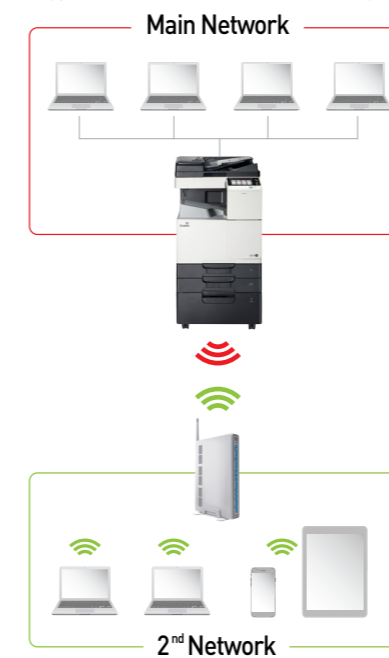
It can be connected directly to MFP with P2P connection via Wi-Fi Direct provided by Wi-Fi Alliance.



Multi-network function

By utilizing different types of networks in one product, security and convenience of document management system are enhanced. Confidential documents can be printed via wired LAN. On the other hand, in the mobile devices, various MFP functions can be used easily and quickly via wireless LAN.

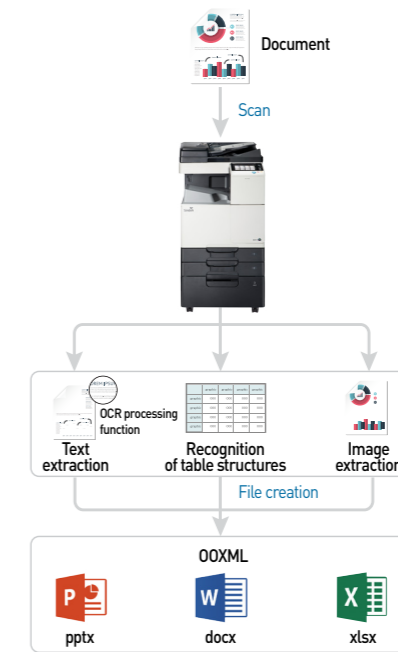
※ Upgrade Kit UK-212 and Local Connection Kit EK-608 required



Easy document conversion

Scanned documents can be digitally converted to PowerPoint, Excel and Word files.

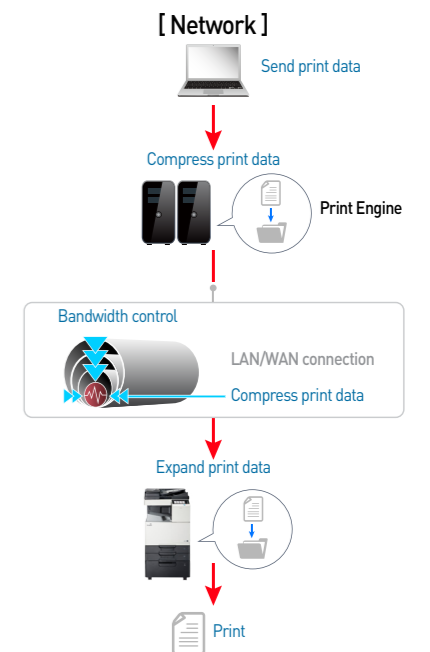
※ Upgrade Kit UK-211 and I-option LK-105 V4, LK-110 V2 required



Faster printing system

Printing function is enhanced by equipping German Thinprint printing solution. Thinprint processes documents by lowering network loading with server based computing environment.

※ I-option LK-111 required

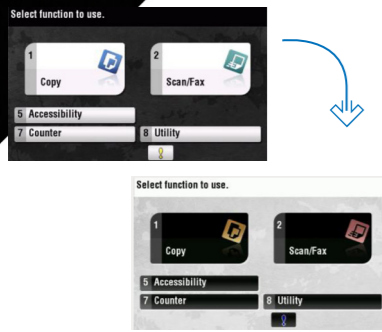




Interface System

Convenient User Interface
User-friendly, easy interface

Color inversion function



For weak-eyed elderly and color weakness users, visibility is increased by maintaining contrast at the same level and providing color inversion function.

User-friendly preview

User can do the editing tasks of the scanned documents such as rotation, zoom in/out, via preview on OP panel.



Customized UI

Screen can be configured as necessary and frequently used functions can be set to shortcut keys, so work productivity can be increased. Also, main screen configuration and icon colors can be set based on the user preference.



- Change icon design
- Register frequently used functions
- User Logo design



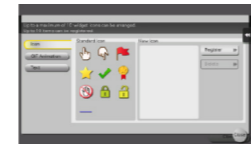
Example of customized interface

Smart widget function

For text boxes or icons, widgets can be used. In widgets, functions that user wants can be set and important messages such as meeting schedules can be informed on the screen as alert. In addition, widget is movable with drag and drop, and can be shared with other MFP via USB.



Text box function



Icon function



GIF animation function



Messaging function

Durability System

Compact Design & Various System

Innovated design, enhanced add-ons

Various finisher options supported

Various types of printing such as staple, folding, saddle stitching, etc can be easily completed using broad finisher options.



	Staple finisher	FS-534	FS-533	JS-506
Sorting	Moves the location of paper throw for easy sorting one by one when printing	STD	STD	STD
Stapling	Corner staple Corner staple (parallel) 2-point staple (side)	Up to 50 sheets (52~90 g/m ²) 2-level folding (52~90 g/m ²)	Up to 50 sheets (52~90 g/m ²)	
Booklet folding	saddle stitching, folding 2-level folding 3-level folding	Saddle Stitcher SD - 511		
Hole punching	2-hole 2-hole on the top	Punching kit PK - 520 (Up to 220 g/m ²)	Punching kit PK - 519 (Up to 157 g/m ²)	
Cover sheet & inside sheet	Cover sheet Inside sheet	STD	STD	STD

Stylish, compact design

Enhances the space usability by adopting compact design which enables to reduce the volume of the products. Also, curved line and mono color makes the office environment more stylish.

